

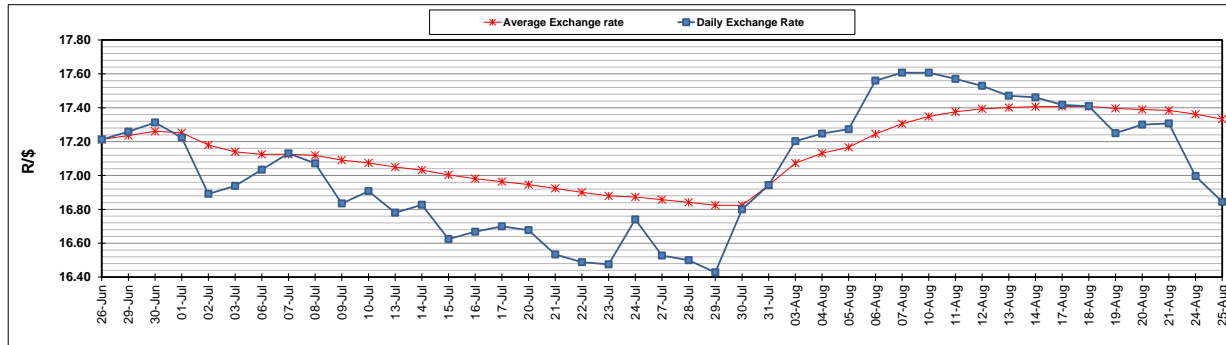
	PETROL 95 ULP	PETROL 93 ULP & LRP	DIESEL 0.05%	DIESEL 0.005%	ILL. PAR.
GAUTENG PUMP PRICE (SA c/l) AS FROM 05/08/2020	1,517.000	1,488.000	-	-	-
WHOLESALE PRICE (SA c/l) AS FROM 05/08/2020	-	-	1,348.560	1,352.960	742.828
SINGLE NATIONAL MAXIMUM RETAIL PRICE	-	-	-	-	934.000
BASIC FUEL PRICE - 25/08/2020 (SA c/l)	575.500	567.707	558.224	561.179	493.995
PRESS RELEASE CONTRIBUTION TO BFP 05/08/2020 - 25/08/2020 (SA c/l)	569.770	550.770	597.630	602.030	538.128
UNIT OVER/(UNDER) RECOVERY - 25/08/2020 (SA c/l)	(5.730)	(16.937)	39.406	40.851	44.133
AVERAGE BASIC FUEL PRICE 31/07/2020 - 25/08/2020	565.538	556.234	573.085	577.256	509.272
AVERAGE UNIT OVER/(UNDER) RECOVERY 31/07/2020 - 25/08/2020	3.399	(6.297)	17.045	17.274	22.356

ANALYSIS MOVEMENT OF AVERAGE OVER/(UNDER) RECOVERY

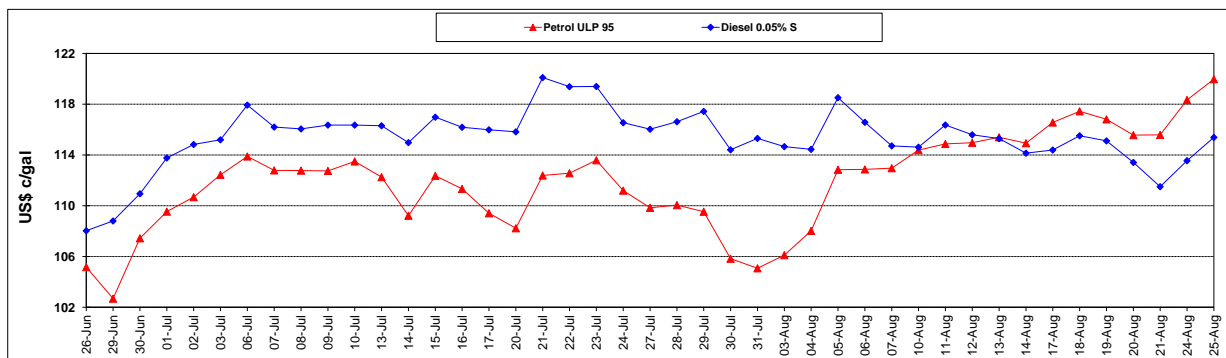
	PETROL 95	PETROL 93	DIESEL 0.05%	DIESEL 0.005%	ILL. PAR.
- MOVEMENT IN INTERNATIONAL PRODUCT PRICES	20.029	10.060	33.897	34.249	37.332
- MOVEMENT IN EXCHANGE RATE	(16.630)	(16.357)	(16.852)	(16.975)	(14.976)
AVERAGE UNIT OVER/(UNDER) RECOVERY 31/07/2020 - 25/08/2020	3.399	(6.297)	17.045	17.274	22.356

R/\$ EXCHANGE RATE - (R/\$16.8448 - 25/08/2020)

EXCHANGE RATE USED IN BASIC FUEL PRICE



INTERNATIONAL PRODUCT PRICES OF BASKET USED IN BASIC FUEL PRICE



BASIC FUEL PRICE IN SA CENTS PER LITRE

